

ARRL Handbook CD

Template File

Title: Kossor Amp

Chapter: 17

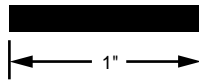
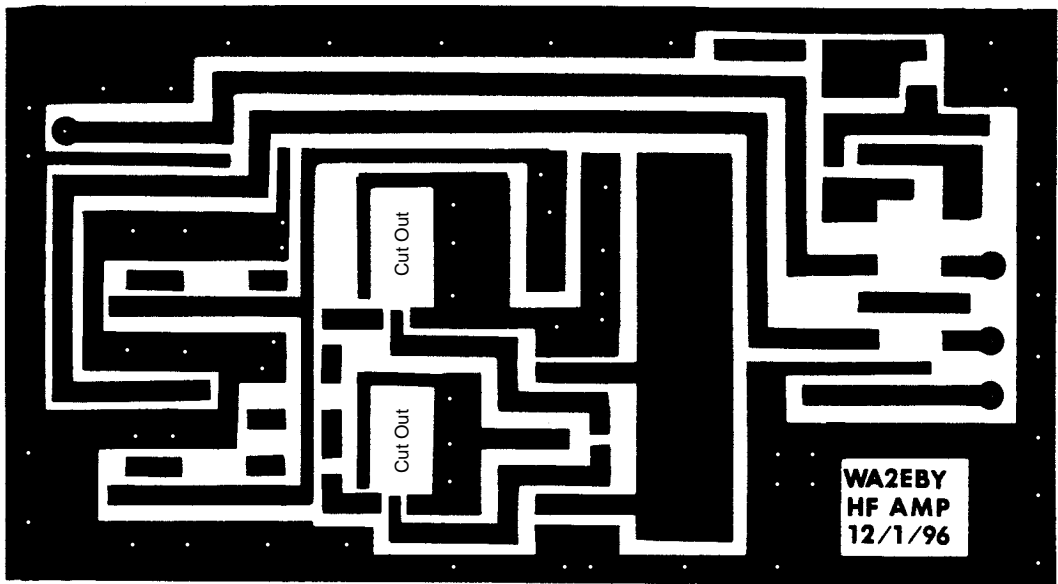
Topic: A Broadband HF Amplifier

Template contains:

Amplifier board etching pattern and parts placement diagram.

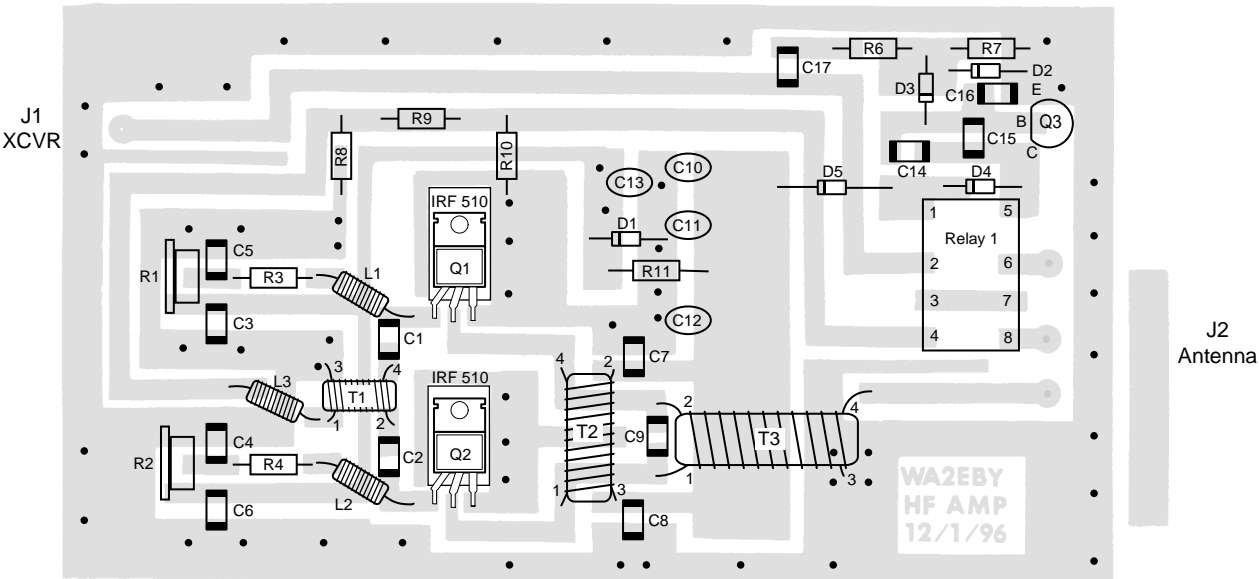
Filter board etching pattern and parts placement diagram.

This is a double-sided circuit board with the second side being a solid ground plane. All components mount to the top of the board, as shown in the parts-placement diagram. Use a 1/4 inch drill bit to remove the copper around each switch pin (but don't drill all the way through the circuit board with that bit!). The other holes are for the insertion of wire jumpers, soldered to both the top trace and the bottom ground foil.

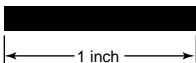
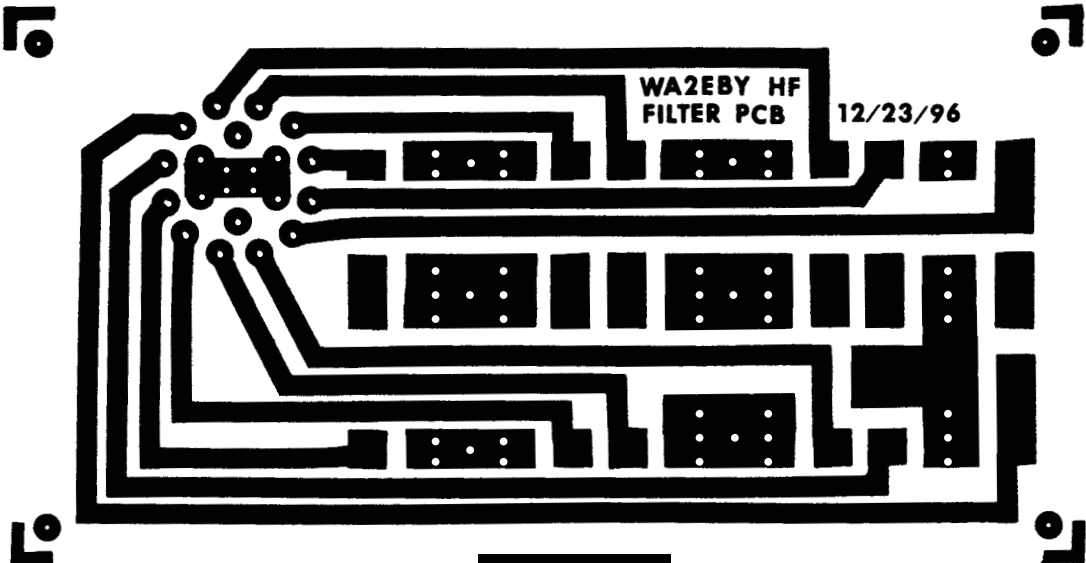


Amplifier Board Etching Pattern

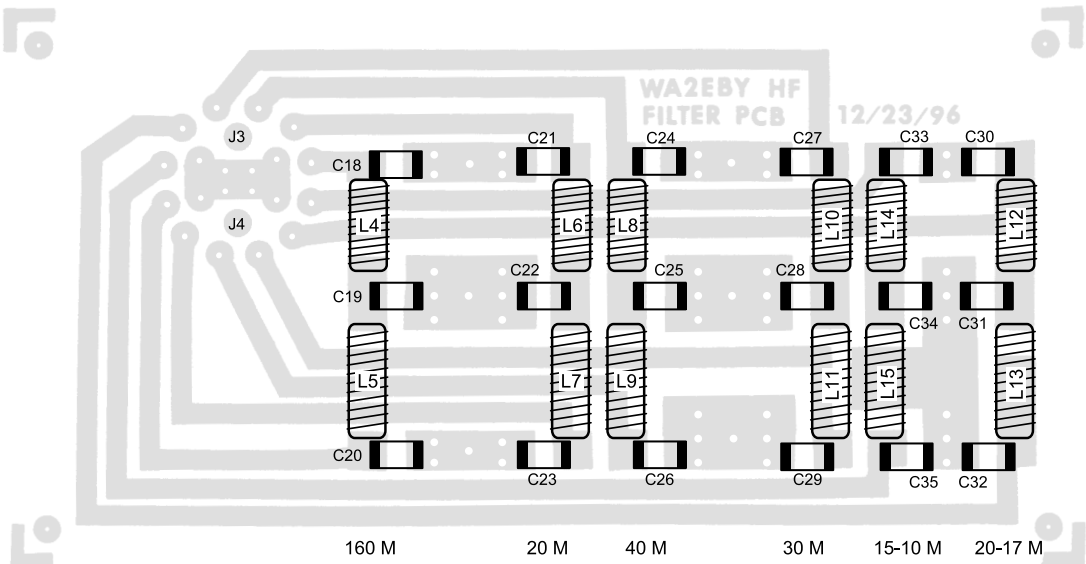
• = Ground via hole



Amplifier Board Parts-Placement Diagram



Filter Board Etching Pattern



Filter Board Parts-Placement Diagram